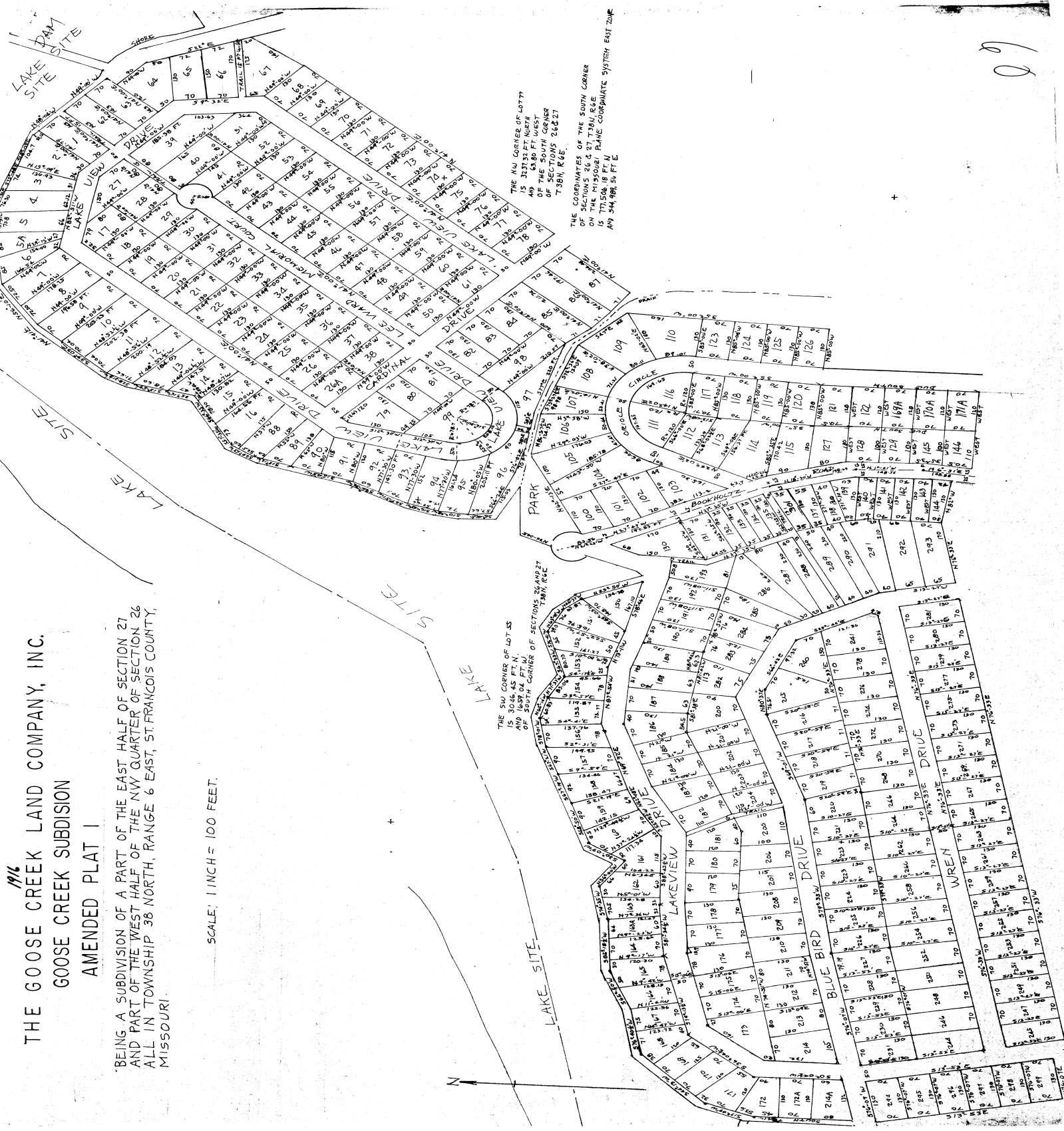


1916
 THE GOOSE CREEK LAND COMPANY, INC.
 GOOSE CREEK SUBDIVISION
 AMENDED PLAT I

BEING A SUBDIVISION OF A PART OF THE EAST HALF OF SECTION 27
 AND PART OF THE WEST HALF OF THE NW QUARTER OF SECTION 26
 ALL IN TOWNSHIP 38 NORTH, RANGE 6 EAST, ST. FRANCIS COUNTY,
 MISSOURI.

SCALE: 1 INCH = 100 FEET.



THE SW CORNER OF LOT 55
 IS 305.45 FT. N.
 AND 305.45 FT. E.
 OF SOUTH CORNER OF SECTION 27
 DAM SITE

THE NW CORNER OF LOT 77
 IS 337.37 FT. N. 77° 11' 11\"/>

THE CORNERS OF THE SOUTH CORNER
 ON THE MICHIGAN PLANE COORDINATE SYSTEM EAST ZONE
 IS 771,508.18 FT. EAST
 AND 344,998.50 FT. E

SHRIVER'S CERTIFICATE
 I, Charles Wesley Goble, Registered Land Surveyor, do hereby certify
 that I have checked the plat hereon dated 1969 and during the first
 five months of 1970, by order of THE GOOSE CREEK LAND COMPANY, INC.,
 with a survey and subdivision of a part of the East half of section 27
 and a part of the West half of the NW quarter of section 26 all in
 Township 38 North, Range 6 East, St. Francis County, Missouri, and
 that the results of said survey and subdivision are correctly shown
 on this plat. WITNESSE MY HAND AND SEAL AT ST. LOUIS, MISSOURI,
 this 22nd day of June, 1970.
 Charles Wesley Goble
 18228.

OWNER'S CERTIFICATE
 THE GOOSE CREEK LAND COMPANY, INC., a corporation of the State of
 Missouri, being the owner of the lands described in the accompanying
 surveyor's certificate has caused said tract of land to be surveyed
 and subdivided in the manner shown on this plat, said subdivision shall
 hereafter be known as GOOSE CREEK SUBDIVISION AMENDED PLAT I.
 Said subdivision shall be subject to the conditions, provisions and
 restrictions as set forth in an instrument on file in the Office of the
 County Clerk of St. Francis County, Missouri, under the name of THE GOOSE CREEK LAND
 COMPANY, INC., and filed for record in Book 3766 at Page 241 in
 the office of the Recorder of Deeds of St. Francis County, Missouri.
 The streets, trails, railroads and ponds shown on this plat are
 hereby dedicated for the use of the owners of these lands. Subdivisions
 of THE GOOSE CREEK LAND COMPANY, INC., caused these
 plat to be signed by its president and the corporate seal to be
 affixed hereto this 22nd day of June, 1970.
 THE GOOSE CREEK LAND COMPANY, INC.
 By *[Signature]*
 R.A. Miesner, President

STATE OF MISSOURI
 COUNTY OF ST. FRANCIS
 SS
 On this 22nd day of June, 1970, before me appeared R.A. Miesner, its President, to me personally known being by me duly sworn, did say that
 he is the president of The Goose Creek Land Company, Inc., a corporation
 of the State of Missouri, and that the seal affixed to the foregoing
 instrument is the Corporate Seal of said corporation, and that said
 instrument was signed and sealed in behalf of said corporation by
 authority of the Board of Directors, and R.A. Miesner, further acknowledged
 said instrument to be the free act and deed of said corporation.
 IN WITNESS WHEREOF I have hereunto set my hand and affixed my
 official seal on the day and year last above written.

By commission expires *[Signature]*
 Notary Public

STATE OF MISSOURI
 COUNTY OF ST. FRANCIS
 I, C. C. Lewis, County Clerk of St. Francis County, Missouri, do hereby certify
 that the foregoing plat was filed for record in my office on the 22nd day of June,
 A.D. 1970, at 11:17 A.M. and was recorded in Book 3766 at Page 241.
 In witness whereof I have hereunto set my hand and seal at St. Louis,
 Missouri, this 22nd day of June, 1970.
 C. C. Lewis, County Clerk
 FILE NO 397A
 BOOK 9
 PAGE 69
 PLAT 1

Quality Contract, Inc. No. 65109
 445 Chestnut St., Suite 100
 St. Louis, Missouri 63101
 Copied from original of *[Signature]*
 signed
 C. C. Lewis
 County Clerk of St. Francis County, Missouri
 RECORDED
 RECORDS OF DEEDS
 ST. FRANCIS COUNTY, MISSOURI

09