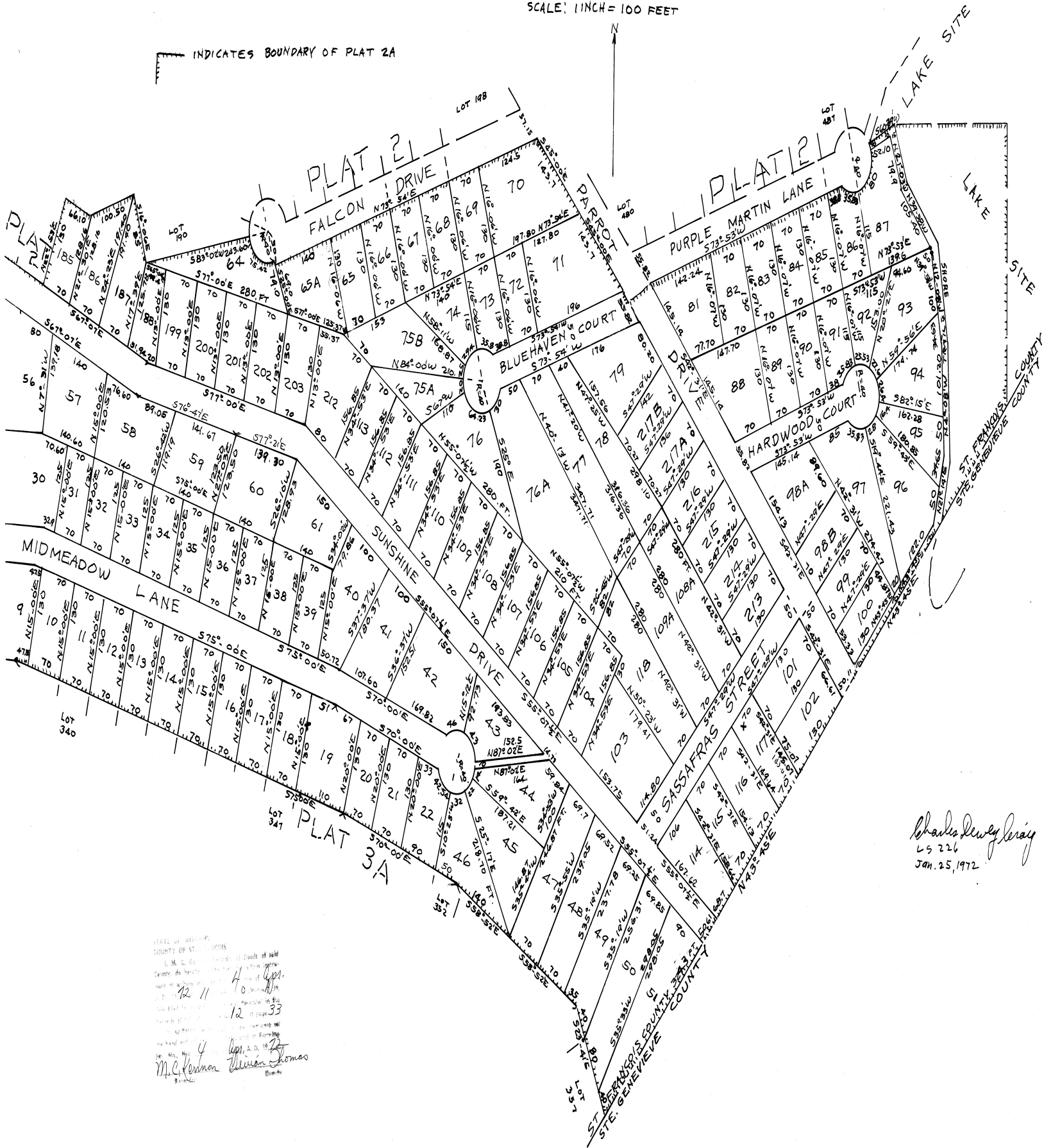


GOOSE CREEK SUBDIVISION - AMENDED PLAT NO. 2A

BEING A SUBDIVISION OF A PART OF THE SW QUARTER OF SECTION 26 AND
 A PART OF THE NE 1/4 OF THE SE 1/4 OF SECTION 27, TOWNSHIP 38 NORTH, RANGE
 6 EAST OF THE FIFTH PRINCIPAL MERIDIAN, ST. FRANCOIS COUNTY, MISSOURI.

SCALE: 1 INCH = 100 FEET

INDICATES BOUNDARY OF PLAT 2A



11612
 12 11 4
 12 33
 M.C. Thomas
 1972

Charles Dewey Leray
 LS 226
 Jan. 25, 1972