

GOOSE CREEK SUBDIVISION 2ND AMENDED PLAT NO. 3A

FILED

MAY 7 1978

M. R. ...

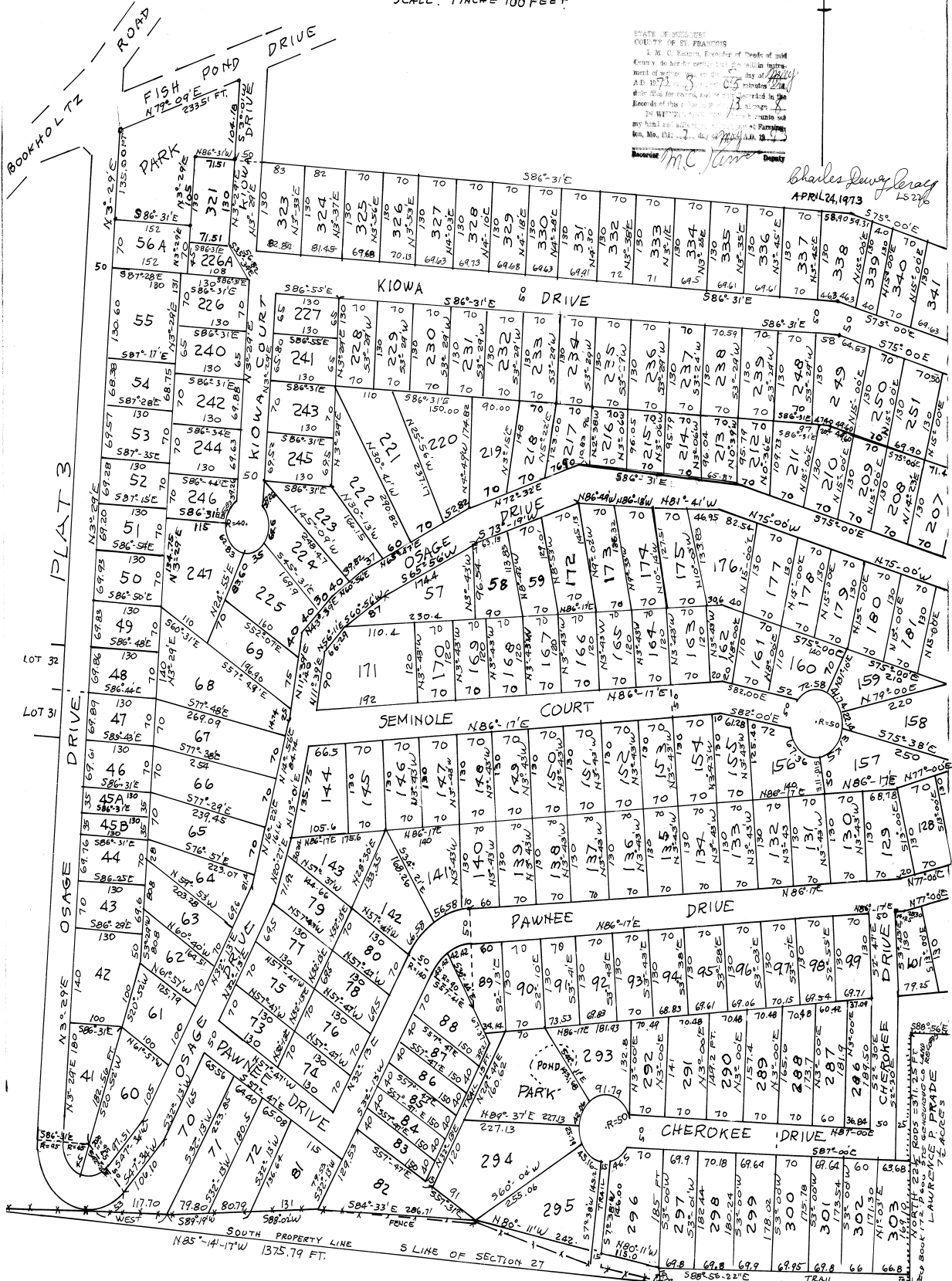
GRID
NORTH

BEING A SUBDIVISION OF A PART OF THE SW 1/4 OF SECTION 26
AND A PART OF THE SE 1/4 OF SECTION 27, TOWNSHIP 38 NORTH,
RANGE 6 EAST OF THE FIFTH PRINCIPAL MERIDIAN, IN ST. FRANCIS
COUNTY, MISSOURI

SCALE: 1 INCH = 100 FEET

STATE OF MISSOURI
COUNTY OF ST. FRANCIS
I, M. R. ...
Notary Public
My Comm. Expires ...
Witness: *MC ...*

Charles Dewey Leray
APRIL 24, 1973



FOUND STONES
SET 1894
SECOR SEC 27
SW COR SEC 26
T38N, R6E