

# GOOSE CREEK SUBDIVISION- PLAT NO. 17

BEING A SUBDIVISION OF THE NW 1/4 OF THE NW 1/4 OF SECTION 27 AND A PART OF THE NE 1/4 OF THE NE 1/4 OF SECTION 28, TOWNSHIP 38 NORTH, RANGE 6 EAST OF THE FIFTH PRINCIPAL MERIDIAN, ST. FRANCOIS COUNTY, MISSOURI.

SCALE: 1 INCH = 100 FEET.

## SURVEYORS CERTIFICATE

I, CHARLES DEWEY CRAIG, REGISTERED LAND SURVEYOR, DO HEREBY CERTIFY THAT FROM AUGUST 29, TO OCTOBER 18, 1972 BY ORDER OF GOOSE CREEK LAND CO. INC. I MADE A SURVEY AND SUBDIVISION OF THE NW 1/4 OF THE NW 1/4 OF SECTION 27, AND A PART OF THE NE 1/4 OF THE NE 1/4 OF SECTION 28, T38N, R6E, EAST OF THE FIFTH PRINCIPAL MERIDIAN, IN ST. FRANCOIS COUNTY, MISSOURI, AND THAT THE RESULTS OF SAID SURVEY AND SUBDIVISION ARE CORRECTLY SHOWN ON THIS PLAT WITNESS MY HAND AND OFFICIAL SEAL THIS 25<sup>TH</sup> DAY OF OCTOBER 1972.

*Charles Dewey Craig* L5226

## OWNERS CERTIFICATE

GOOSE CREEK LAND CO. INC., A CORPORATION OF THE STATE OF MISSOURI, BEING OWNER OF THE LANDS DESCRIBED IN THE ACCOMPANYING SURVEYORS CERTIFICATE HAS CAUSED SAID TRACT OF LAND TO BE SURVEYED AND SUBDIVIDED IN THE MANNER SHOWN ON THIS PLAT SAID SUBDIVISION SHALL HEREAFTER BE KNOWN AS, GOOSE CREEK SUBDIVISION PLAT NO. 17. SAID SUBDIVISION SHALL BE SUBJECT TO THE CONDITION, RESERVATIONS AND RESTRICTIONS AS SET FORTH IN AN INSTRUMENT DATED SEPTEMBER 29, 1969 AND FILED FOR RECORD IN BOOK 506 AT PAGE 390 IN THE OFFICE OF THE RECORDER OF DEEDS OF ST. FRANCOIS COUNTY, MISSOURI. THE STREETS, TRAILS, WALKWAYS AND PARKS SHOWN ON THIS PLAT ARE HEREBY DEDICATED FOR THE USE OF THE LOT OWNERS OF GOOSE CREEK SUBDIVISION. IN WITNESS WHEREOF, GOOSE CREEK LAND CO. INC. CAUSES THE PRESENTS TO BE SIGNED BY ITS PRESIDENT AND THE CORPORATE SEAL TO BE AFFIXED HERUNTO THIS 27<sup>TH</sup> DAY OF OCTOBER 1972.

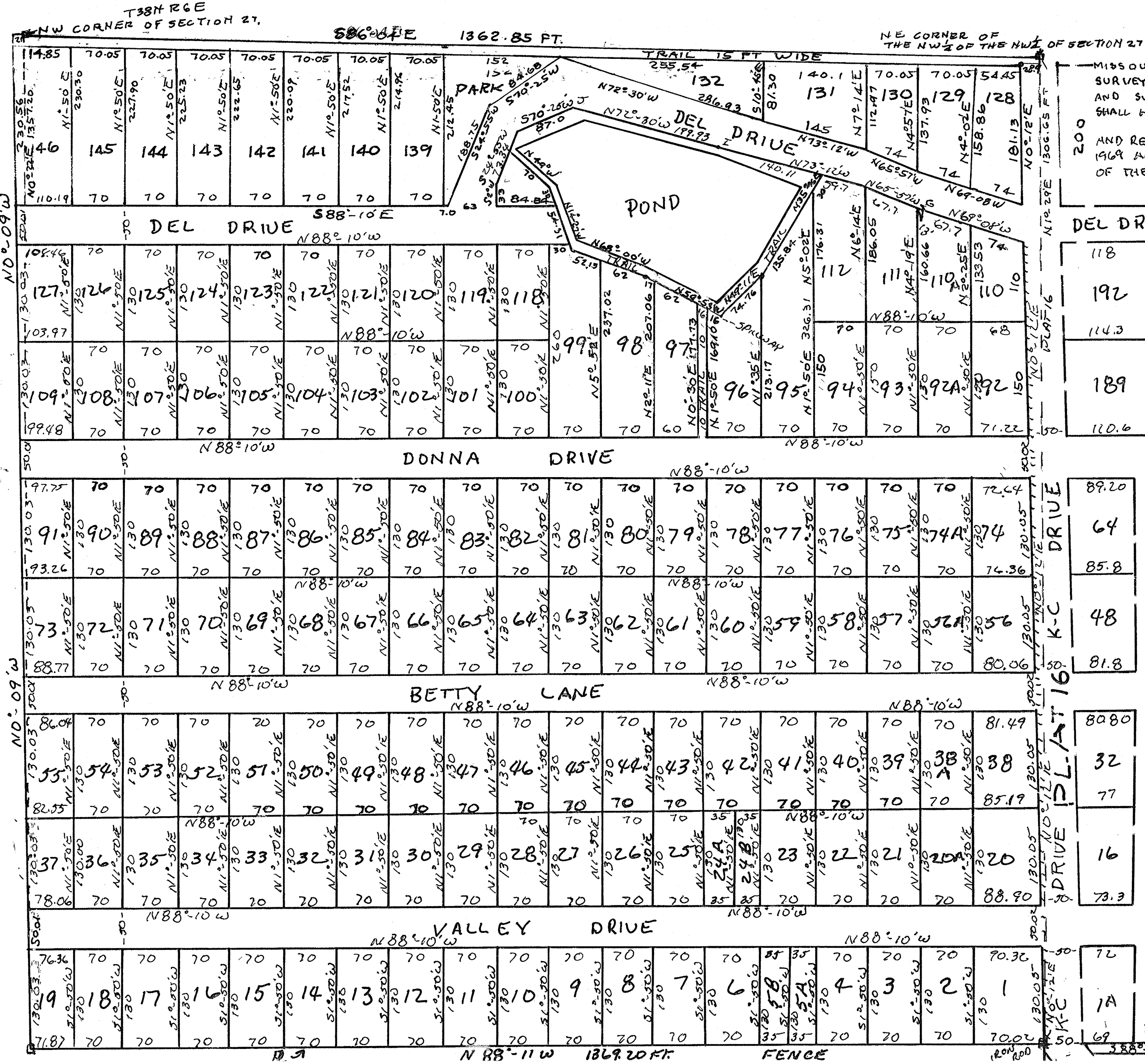
GOOSE CREEK LAND CO. INC.  
*R. E. NIEMEYER*  
R. E. NIEMEYER, PRESIDENT

## NOTARY CERTIFICATE

STATE OF MISSOURI  
COUNTY OF *Jefferson* 55

ON THIS 27<sup>TH</sup> DAY OF *October* 1972, BEFORE ME APPEARED R. E. NIEMEYER, TO ME PERSONALLY KNOWN, WHO BEING BY ME DULY SWORN, DID SAY THAT HE IS THE PRESIDENT OF GOOSE CREEK LAND CO. INC., A CORPORATION OF THE STATE OF MISSOURI, AND THAT THE SEAL AFFIXED TO THE FOREGOING INSTRUMENT IS THE CORPORATE SEAL OF SAID CORPORATION, AND THAT SAID INSTRUMENT WAS SIGNED AND SEALED IN BEHALF OF SAID CORPORATION BY AUTHORITY OF ITS BOARD OF DIRECTORS, AND R. E. NIEMEYER FURTHER ACKNOWLEDGED SAID INSTRUMENT TO BE THE FREE ACT AND DEED OF SAID CORPORATION. I TESTIMONY WHEREOF, I HAVE HERUNTO SET MY HAND AND AFFIXED MY NOTORIAL SEAL ON THE DAY AND YEAR LAST ABOVE WRITTEN.

MY COMMISSION EXPIRES  
*August 24, 1974*  
*Janice J. Spiller*  
Notary Public



118
192
143
189
110.6

89.20
64
85.8
48
81.8

8080
32
77
16
73.3

72
1A
69

*Handwritten notes and signatures at the bottom right of the plat, including a signature that appears to be 'R. E. Niemeyer' and some illegible text.*