

GOOSE CREEK SUBDIVISION
PLAT NO. 22

BEING A SUBDIVISION OF A PART OF THE SE 1/4 OF SECTION 26, TOWNSHIP 36 NORTH, RANGE 6 EAST, OF THE FIFTH PRINCIPAL MERIDIAN IN STE. GENEVIEVE COUNTY, MISSOURI.

WITNESSES MY HAND AND SEAL THIS 30TH DAY OF MAY 1973
Charles Perry, Surveyor

OWNERS CERTIFICATE
GOOSE CREEK LAND CO. INC. A CORPORATION OF THE STATE OF MISSOURI, BEING THE OWNER OF THE LAND DESCRIBED IN THE ACCOMPANYING SURVEYOR'S CERTIFICATE HAS CAUSED SAID TRACT OF LAND TO BE SURVEYED AND SUBDIVIDED IN THE MANNER SHOWN ON THIS PLAT, WHICH SUBDIVISION SHALL HEREAFTER BE KNOWN AS 'GOOSE CREEK SUBDIVISION PLAT NO. 22'.

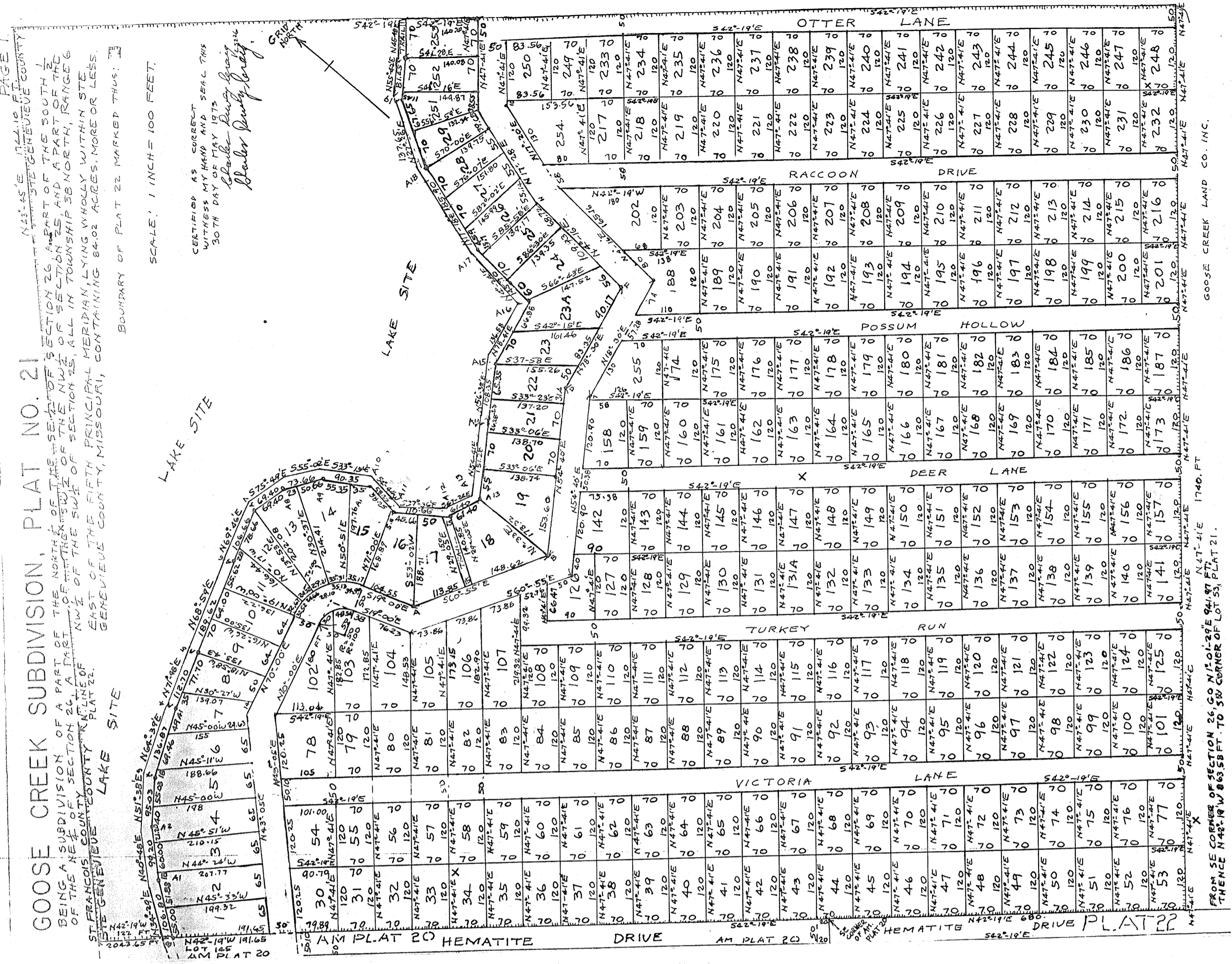
SAID SUBDIVISION SHALL BE SUBJECT TO THE CONDITIONS, RESTRICTIONS AND EASEMENTS SET FORTH IN AN INSTRUMENT DATED AND RECORDED AS ABOVE AND FILED IN THE OFFICE OF THE CLERK OF STE. GENEVIEVE COUNTY, MISSOURI. THE INTERESTS, RIGHTS, EASEMENTS AND EMBODIED IN THIS PLAT ARE HEREBY DEDICATED FOR THE USE OF LOT OWNERS OF GOOSE CREEK SUBDIVISION.

IN WITNESS WHEREOF GOOSE CREEK LAND CO. INC., CAUSES THESE PRESENTS TO BE SIGNED BY ITS PRESIDENT AND THE CORPORATE SEAL TO BE AFFIXED HERETO, THIS 30TH DAY OF MAY 1973.

BY: *[Signature]*
N. B. HERRBERT, PRESIDENT.

STATE OF MISSOURI
COUNTY OF STE. GENEVIEVE
I, CHARLES PERRY, Surveyor, do hereby certify that the above described plat was prepared by me in accordance with the provisions of the laws of this state and that the same is a true and correct copy of the original as the same appears in my office.

WITNESSED MY HAND AND SEAL THIS 30TH DAY OF MAY 1973
[Signature]
Charles Perry, Surveyor



PAGE 1

GOOSE CREEK SUBDIVISION, PLAT NO. 21
BEING A SUBDIVISION OF A PART OF THE NORTHWEST CORNER OF SECTION 26, TOWNSHIP 36 NORTH, RANGE 6 EAST, OF THE FIFTH PRINCIPAL MERIDIAN IN STE. GENEVIEVE COUNTY, MISSOURI, CONTAINING 84.02 ACRES, MORE OR LESS.

SCALE: 1 INCH = 100 FEET.
CERTIFIED AS CORRECT
WITNESS MY HAND AND SEAL THIS
30TH DAY OF MAY 1973
Charles Perry, Surveyor

GOOSE CREEK LAND CO. INC.
1740. FT
FROM SE CORNER OF SECTION 26, CO. N. 1/4, 26 E. 94.97 FT. THENCE N 42° 19' W 863.58 FT. TO SW CORNER OF LOT 21, PLAT 21.

7932
Filed for Record this 21 day
of June A. 1973 at 8 o'clock
at St. Louis, Mo.
A. M.
[Signature]
By: Jeannette Backe