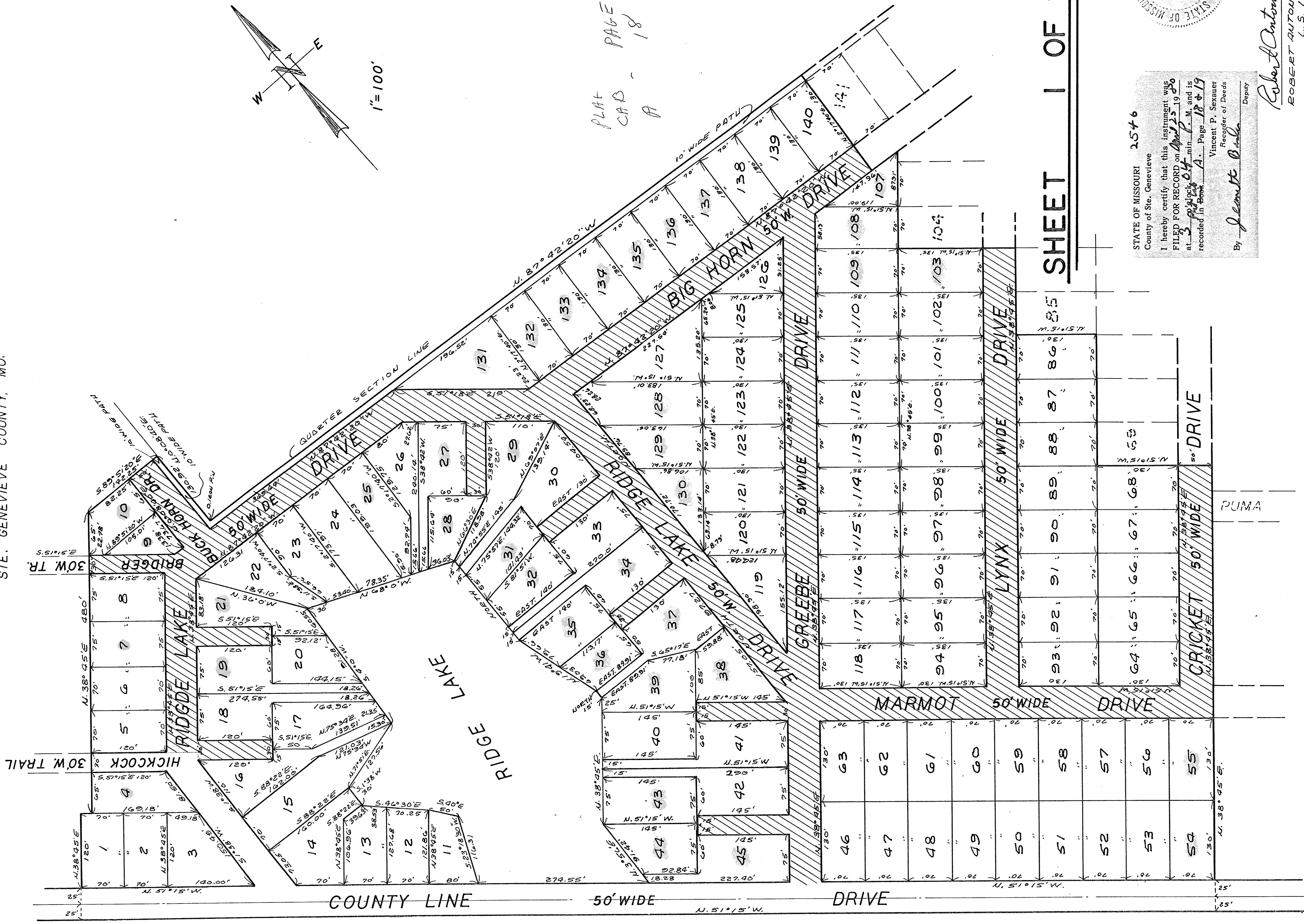


GOOSE CREEK PLAT 26

SECTION 23, TOWNSHIP 38 N., RANGE 6 E.
STE. GENEVIEVE COUNTY, MO.



PLAT PAGE
CAD - 18
A

1" = 100'



STATE OF MISSOURI 2546
County of Ste. Genevieve
I hereby certify that this instrument was
FILED FOR RECORD on April 25 19 20
at 3 30 o'clock PM min. P. M. and is
recorded in Book A, Page 18 + 19
By Vincent P. Saxauer Recorder of Deeds
James B. O'Neil Deputy

Robert Anton Enzeauer
ROBERT ANTON ENZEAUER
L.S. 1876

SHEET 1 OF 2

LAND SURVEY, INC.
ROUTE 3, HILLSBORO, MISSOURI 63050