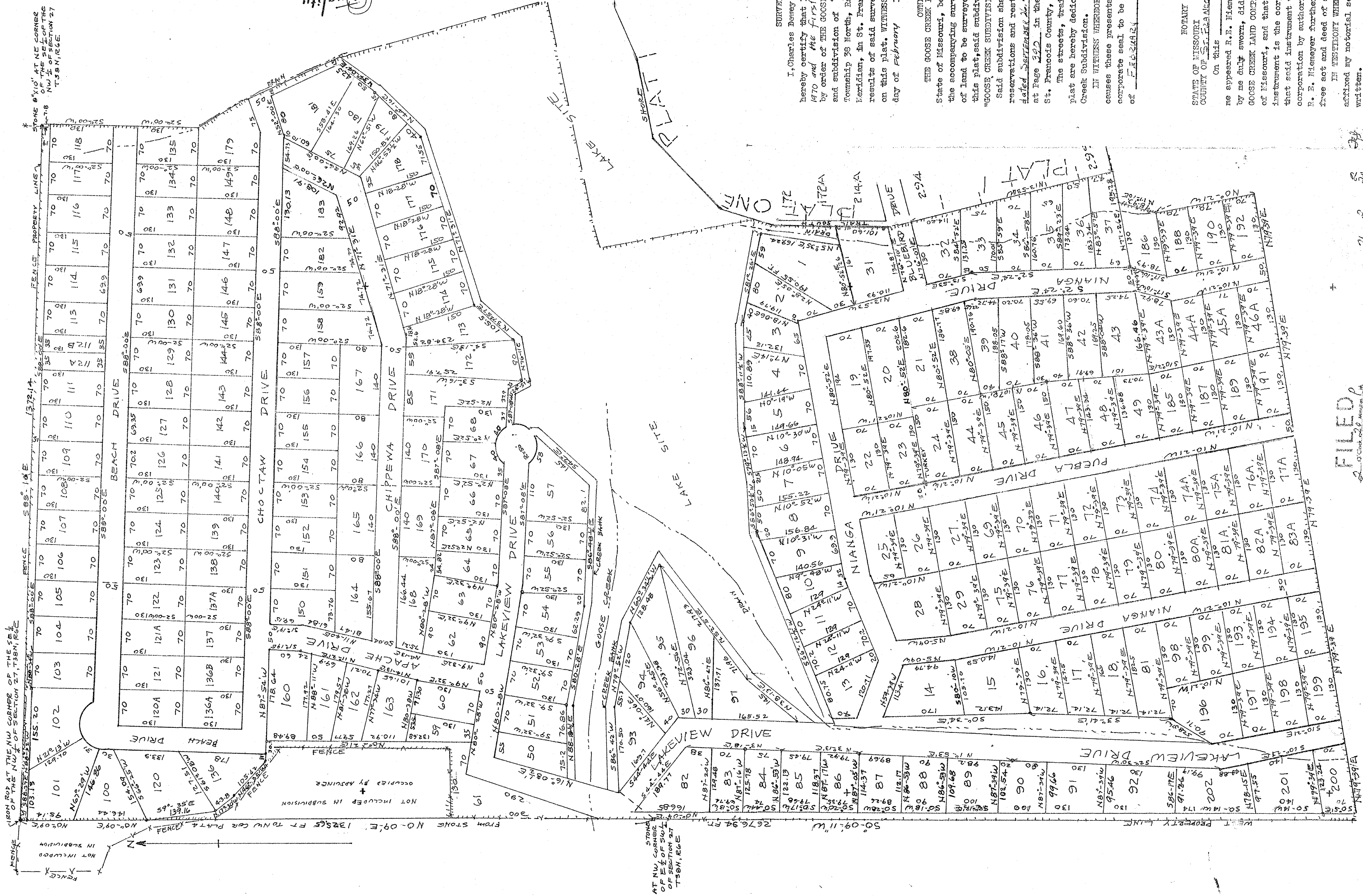


520

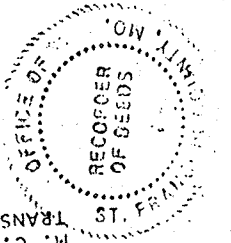
# GOOSE CREEK SUBDIVISION- PLAT NO. 4

BEING A SUBDIVISION OF A PART OF THE SE 1/4 OF THE NW 1/4, A PART THE EAST 1/2 OF THE SW 1/4 AND A PART OF THE NW 1/4 OF THE NE 1/4, ALL IN SECTION 27, TOWNSHIP 38 NORTH, RANGE 6 EAST OF THE FIFTH PRINCIPAL MERIDIAN, ST FRANCIS COUNTY, MISSOURI.

SCALE: 1 INCH = 100 FEET.



Quality company inc.  
Blue Print company inc.  
4411 Chippewa St. Louis, Mo. 63109  
Copied from original by Electrostat Process  
Signed  
H. C. KENNON, RECORDER OF DEEDS  
TRANSCRIBED FEBRUARY 1974



**SURVEYOR'S CERTIFICATE**  
I, Charles Dewey Craig, Registered Land Surveyor, do hereby certify that I have during the last 6 months of 1970 and the first month of 1971 by order of THE GOOSE CREEK LAND COMPANY INC., made a survey and subdivision of a part of the SE 1/4 of the NW 1/4, a part the East 1/2 of the SW 1/4 and a part of the NW 1/4 of the NE 1/4 of Section 27, Township 38 North, Range 6 East of the Fifth Principal Meridian, in St. Francis County, Missouri, and that the results of said survey and subdivision are correctly shown on this plat. WITNESS MY HAND AND OFFICIAL SEAL this first day of February 1971.

**OWNER'S CERTIFICATE**  
THE GOOSE CREEK LAND COMPANY, INC., a corporation of the State of Missouri, being the owner of the lands described in the accompanying surveyor's certificate has caused said tract of land to be surveyed and subdivided in the manner shown on this plat, said subdivision shall hereafter be known as, "GOOSE CREEK SUBDIVISION PLAT NO. 4".  
Said subdivision shall be subject to the conditions, reservations and restrictions as set forth in an instrument dated September 22, 1968, and filed for record in Book 526, at Page 222, in the office of the Recorder of Deeds of St. Francis County, Missouri.  
The streets, trails, walkways and parcels shown on this plat are hereby dedicated for the use of lot owners of Goose Creek Subdivision.

IN WITNESS WHEREOF, THE GOOSE CREEK LAND COMPANY INC., causes these presents to be signed by its president and the corporate seal to be affixed hereto this 2nd day of February 1971.  
THE GOOSE CREEK LAND COMPANY, INC.  
By R. E. Niemeyer, President

**FORMY CERTIFICATE**  
STATE OF MISSOURI  
COUNTY OF ST. FRANCIS  
On this 22nd day of February, 1971, before me appeared R. E. Niemeyer, to me personally known, who being by me duly sworn, did say that he is the president of THE GOOSE CREEK LAND COMPANY, INC., a corporation of the State of Missouri, and that the seal attached to the foregoing instrument is the corporate seal of said corporation, and that said instrument was signed and sealed in behalf of said corporation by authority of its board of directors, and R. E. Niemeyer further acknowledged said instrument to be the free act and deed of said corporation.  
IN TESTIMONY WHEREOF, I have hereunto set my hand and affixed my notarial seal on the day and year last above written.  
My commission expires February 15, 1974.  
Notary Public.

FILED

St. Francis County, Missouri

H. C. Kennon

Notary Public