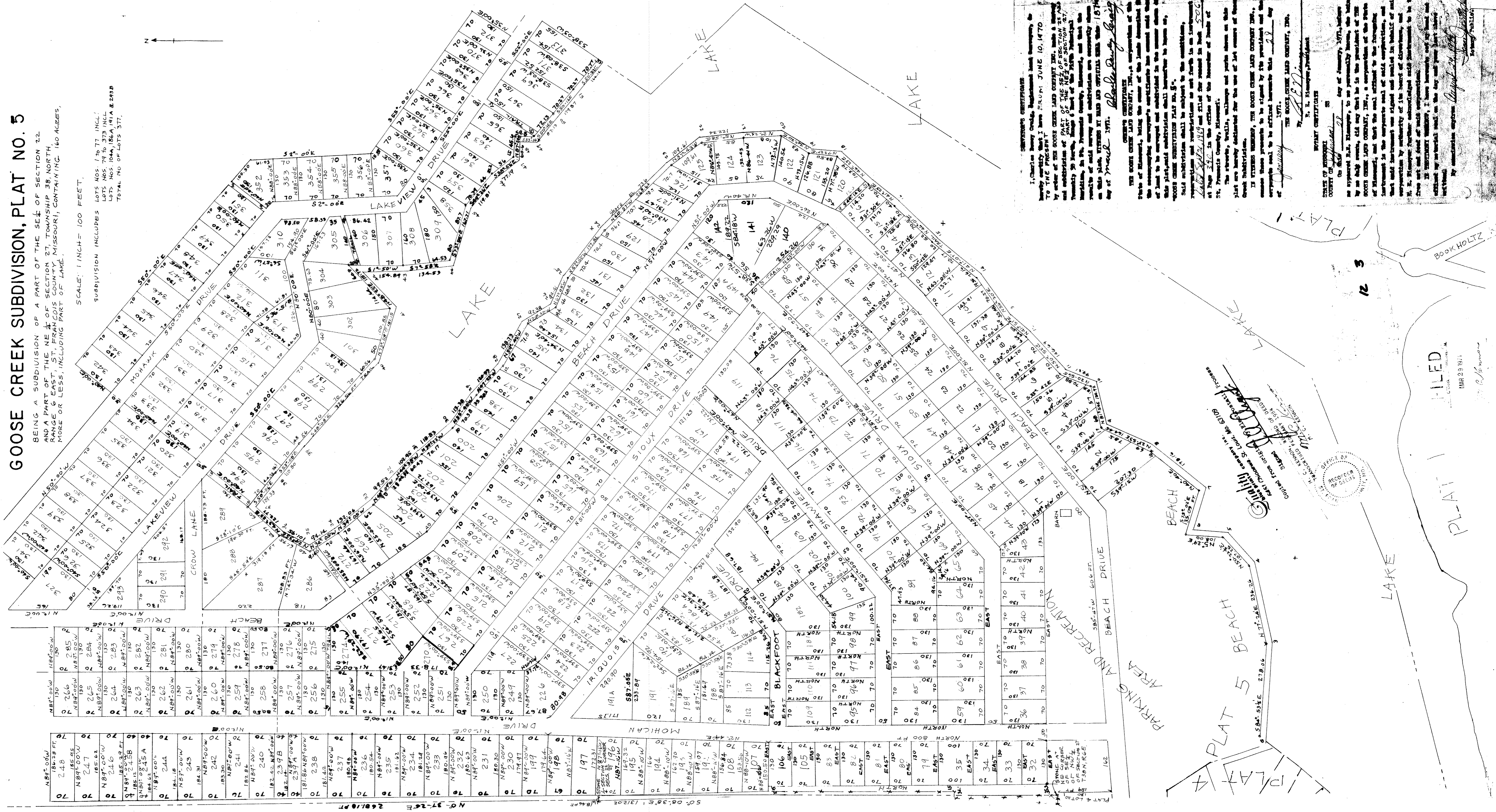


GOOSE CREEK SUBDIVISION, PLAT NO. 5

BEING A SUBDIVISION OF A PART OF THE SE 1/4 OF SECTION 27, TOWNSHIP 38, NORTH, RANGE 6 EAST, ST. FRANCIS COUNTY, MISSOURI, CONTAINING 160 ACRES, MORE OR LESS, INCLUDING PART OF LAKE.

SCALE: 1 INCH = 100 FEET.

SUBDIVISION INCLUDES
 LOTS NOS. 1 TO 77, INCL.
 LOTS NOS. 79 TO 173, INCL.
 LOTS NOS. 104A, 186A, 191A & 202B
 TOTAL INV. OF LOTS 377.



STANDARD CONDITIONS
 I, Charles Henry Greig, Registered Land Surveyor, do hereby certify that I have FROM JUNE 10, 1970 TO THE PRESENT

GENERAL CONDITIONS
 THE GOOSE CREEK LAND COMPANY, INC., a corporation of the State of Missouri, being the owner of the land described in the foregoing survey, and its successors have caused said plat to be prepared and subdivided in the manner shown on this plat, and subdivision shall hereafter be known as, "GOOSE CREEK SUBDIVISION PLAT NO. 5".

THE GOOSE CREEK LAND COMPANY, INC.
 This subdivision shall be subject to the conditions, regulations and restrictions set forth in an instrument filed with the Missouri State Records Office in the office of the Recorder of Deeds of St. Francis County, Missouri.

THE SURVEYOR'S CERTIFICATE
 The survey, plat, maps and books shown on this plat are hereby declared to be the true and correct plat of the subdivision.

THE GOOSE CREEK LAND COMPANY, INC.
 This subdivision shall be subject to the conditions, regulations and restrictions set forth in an instrument filed with the Missouri State Records Office in the office of the Recorder of Deeds of St. Francis County, Missouri.

THE SURVEYOR'S CERTIFICATE
 The survey, plat, maps and books shown on this plat are hereby declared to be the true and correct plat of the subdivision.

NOTARY CERTIFICATE
 I, R. S. Hampe, Notary Public, do hereby certify that I have seen the foregoing plat of the subdivision and the same appears to be a correct and true copy of the original plat of the subdivision as filed with the Missouri State Records Office in the office of the Recorder of Deeds of St. Francis County, Missouri.

STATE OF MISSOURI
 COUNTY OF ST. FRANCIS
 On this 22 day of January, 1971, before me, R. S. Hampe, Notary Public, do hereby certify that I have seen the foregoing plat of the subdivision and the same appears to be a correct and true copy of the original plat of the subdivision as filed with the Missouri State Records Office in the office of the Recorder of Deeds of St. Francis County, Missouri.

WITNESSES
 I, R. S. Hampe, Notary Public, do hereby certify that I have seen the foregoing plat of the subdivision and the same appears to be a correct and true copy of the original plat of the subdivision as filed with the Missouri State Records Office in the office of the Recorder of Deeds of St. Francis County, Missouri.

WITNESSES
 I, R. S. Hampe, Notary Public, do hereby certify that I have seen the foregoing plat of the subdivision and the same appears to be a correct and true copy of the original plat of the subdivision as filed with the Missouri State Records Office in the office of the Recorder of Deeds of St. Francis County, Missouri.

WITNESSES
 I, R. S. Hampe, Notary Public, do hereby certify that I have seen the foregoing plat of the subdivision and the same appears to be a correct and true copy of the original plat of the subdivision as filed with the Missouri State Records Office in the office of the Recorder of Deeds of St. Francis County, Missouri.

RECORDS OF DEEDS
 OFFICE OF THE RECORDER OF DEEDS
 ST. FRANCIS COUNTY, MISSOURI
 FILED
 MAR 23 1971
 R. S. Hampe, Notary Public