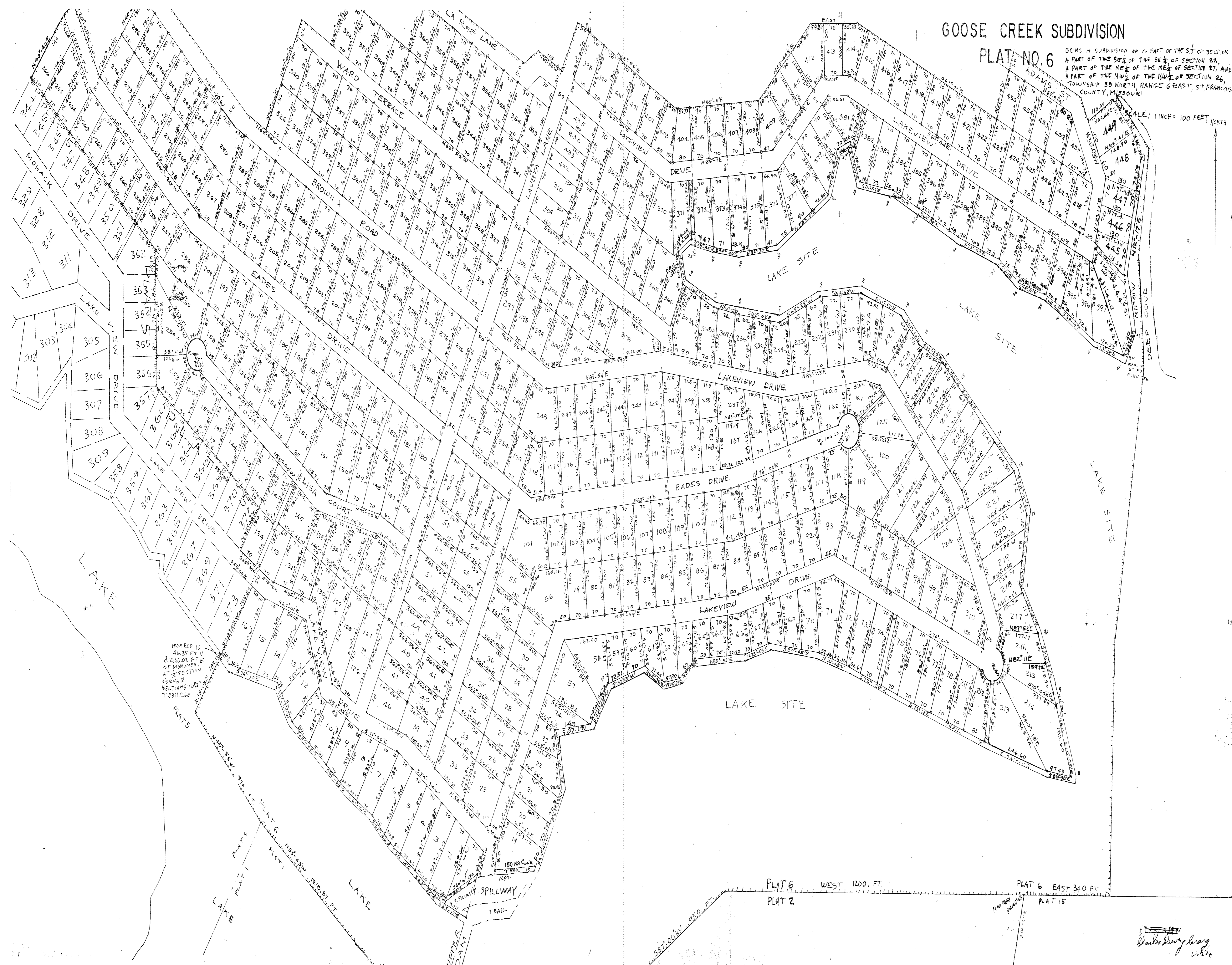


# GOOSE CREEK SUBDIVISION

PLAT NO. 6

BEING A SUBDIVISION OF A PART OF THE SE 1/4 OF SECTION 23, A PART OF THE SE 1/4 OF THE SE 1/4 OF SECTION 22, A PART OF THE NE 1/4 OF THE NE 1/4 OF SECTION 27, AND A PART OF THE NW 1/4 OF SECTION 26, TOWNSHIP 38 NORTH, RANGE 6 EAST, ST. FRANCIS COUNTY, MISSOURI

SCALE: 1 INCH = 100 FEET NORTH



**SURVEYOR'S CERTIFICATE**  
 I, Charles Dewey Craig, Registered Land Surveyor, do hereby certify that I have during the months of February to November, inclusive, 1971, by order of THE GOOSE CREEK LAND COMPANY, INC., made a survey and subdivision of the SE 1/4 of Section 23, a part of the SE 1/4 of the SE 1/4 of Section 22, a part of the NE 1/4 of the NE 1/4 of Section 27, and a part of the NW 1/4 of Section 26, Township 38 North, Range 6 East of the Fifth Principal Meridian, in St. Francis County, Missouri, and that the results of said survey and subdivision are correctly shown on this plat, WITNESS MY HAND AND OFFICIAL SEAL this 7th day of December 1971.

*Charles Dewey Craig*  
 Surveyor

**OWNER'S CERTIFICATE**  
 THE GOOSE CREEK LAND COMPANY, INC., a corporation of the State of Missouri, being the owner of the lands described in the accompanying surveyor's certificate has caused said tract of land to be surveyed and subdivided in the manner shown on this plat, said subdivision shall hereafter be known as, GOOSE CREEK SUBDIVISION PLAT NO. 6.  
 Said subdivision shall be subject to the conditions, reservations and restrictions as set forth in an instrument dated September 24, 1971 and filed for record in Book 360 at Page 77 in the office of the Recorder of Deeds of St. Francis County, Missouri.  
 The streets, trails, walkways and parks shown on this plat are hereby dedicated for the use of lot owners of Goose Creek Subdivision.  
 IF FITNESS WHEREOF, THE GOOSE CREEK LAND COMPANY, INC., causes these presents to be signed by its president and the corporate seal to be affixed hereto this 7th day of December 1971.

THE GOOSE CREEK LAND COMPANY, INC.  
*R. D. Hineseyer*  
 R. D. Hineseyer, President

**NOTARY CERTIFICATE**  
 STATE OF MISSOURI  
 COUNTY OF St. Francis  
 On this 7th day of December, 1971, before me appeared R. D. Hineseyer, to me personally known, who being by me duly sworn, did say that he is the president of THE GOOSE CREEK LAND COMPANY, INC., a corporation of the State of Missouri, and that the seal affixed to the foregoing instrument is the corporate seal of said corporation, and that said instrument was signed and sealed in behalf of said corporation by authority of its board of directors, and R. D. Hineseyer further acknowledged said instrument to be the free act and deed of said corporation.  
 IN WITNESS WHEREOF, I have hereunto set my hand and affixed my notarial seal on the day and year last above written.  
 My commission expires August 24, 1974.

*James Paul Phillips*  
 Notary Public.

**Quality**  
 blue print company  
 6451 Chickens St. Louis, Mo. 63109  
 Copied from original by Electronic Process  
 Signed *J. A. Knight*  
 M. C. KENNON, RECORD OF DEEDS  
 TRANSCRIBED FEBRUARY 1974

**FILED**  
*M. C. Kennon*  
 M. C. KENNON  
 COUNTY OF ST. FRANCIS  
 I, M. C. Kennon, Recorder of Deeds of said County, do hereby certify that the foregoing plat was filed for record in my office on the 9th day of December, 1971, at 12:00 P.M. and that the same is a true and correct copy of the original as filed in my office, and that the same has been duly recorded in my office. WITNESS MY HAND AND OFFICIAL SEAL this 9th day of December, 1971.

*Charles Dewey Craig*  
 12/22/71